

**Whistler Regatta
August 17-18 2024**

SAILING INSTRUCTIONS (SI)

The notation '[NP]' in a rule means that a boat may not protest another boat for breaking that rule. This changes RRS 60.1(a).

1. RULES

The regatta will be governed by rules as defined in *The Racing Rules of Sailing (RRS)* for 2021 - 2024.

2. NOTICE TO COMPETITORS

Notices to competitors, including a copy of the Notice of Race and these SI's will be posted on the official notice board(s) at Whistler Sailing located at 5678 Alta Lake Road.

3. CHANGES TO SAILING INSTRUCTIONS

- 3.1. Any changes to the sailing instructions will be posted before 0900 on the day it will take effect on the official notice board(s), except that any change to the schedule of races will be posted by 2000 on the day before it will take effect.
- 3.2. Per RRS 90.2(c), oral instructions may be provided to the Optimist Green fleet.

4. SIGNALS MADE ASHORE

- 4.1. Signals made ashore will be displayed on the flagpole at Whistler Sailing.
- 4.2. When a signal is displayed over a class flag, it applies to that class only.
- 4.3. When flag "L" is displayed ashore, it means that a notice to competitors has been posted. Failure of the race committee to comply with the rule will not be grounds for redress.
- 4.4. When flag "AP" is displayed ashore, "1 minute" is replaced by 'not less than 20 - minutes' in RSS Races Signals AP.

5. SCHEDULE OF RACES

- 5.1. Racing is scheduled as follows:

<i>Saturday August 17 2024</i>	<i>11:00hrs.</i>	<i>First race, <u>all fleets</u></i>
<i>Sunday August 18 2024</i>	<i>10:30hrs.</i>	<i>First race, <u>all fleets</u></i>

- 5.2. There is no maximum number of races.
- 5.3. The last warning signal for Saturday, 17 August 2024 shall be determined by the Race Officer as conditions dictate.

5.4. No races will be started after 15:00 hrs on Sunday, 18 August 2024.

6. CLASS FLAGS

6.1. Class flags will be as follows: Optimist Class flag, Green flag with the Optimist insignia for the Optimist Green Fleet, ILCA 7 flag, ILCA 6 flag, ILCA 4 flag, Pirate flag.

7. RACE AREA

The race will be on Alta Lake, Whistler, British Columbia.

8. THE COURSES

8.1. The courses to be sailed are given in Appendix 1 of these SI's.

8.2. The Optimist Green course will be established verbally with the competitors.

9. MARKS - See Appendix 1 for course diagrams.

9.1. Marks 1 will be a yellow tetrahedron.

9.2. Mark 2s and 2p will be green tetrahedrons

9.3. Mark 3 and Mark 5 will be orange tetrahedrons.

9.4. Mark 4s and 4p will be Purple Balls.

9.5. The start marks will be the Race Committee vessel flying a Dark Blue RC Flag and a pin with a Reg Flag.

9.6. The finish marks will be the finishing vessel flying a yellow flag and a pin with a yellow flag.

9.7. The change mark for mark 1 will be a pink ball.

9.8. The change mark for mark 3 will be a red ball.

10. THE START

10.1. The starting line will be between the staff displaying RC flag on the Race Committee vessel and the course side of the staff displaying the Red flag on the starting mark.

10.2. Rule 26, columns 1 and 4 are changed as follows:

Minutes before starting signal	Signal meaning
3	Warning signal
2	Preparatory signal
1	One minute
0	Starting signal

- 10.3. The Starting Area extends 50 meters from all points of the starting line.
- 10.4. [DP][NP] Boats whose preparatory signal has not been made shall keep clear of the starting area and of all boats whose preparatory signal has been made.
- 10.5. [NP] A boat starting later than 4 minutes after her starting signal will be scored DNS without a hearing. This changes RRS A4 and A5.

11. SHORTENED COURSE

- 11.1. Should the Race Committee decide to shorten course for a particular class or classes, flag 'S' shall be displayed with the class flag and the shortened course shall apply **only to the class or classes whose flag is displayed**. Class signals will not be displayed when the Race Committee intends to shorten the course for all classes. This changes RRS 32.1.

12. CHANGE OF THE POSITION OF THE NEXT MARK

- 12.1. The change the position of the next mark, (or move the finishing line), the race committee will lay a new mark (or move the finishing line) and remove the original mark as soon as practicable. When, in a subsequent change, a new mark is replaced, it will be replaced by an original mark.

13. THE FINISH

- 13.1. The finish line shall be between the flag on the finish vessel and the course side of the finish mark staff.

14. PENALTY SYSTEM

- 14.1. Appendix P, Special procedures for the RRS 42 will apply with the following changes: in P2.1 - First Penalty, the word "first" is deleted, and RRS P2.2 and P2.3 are deleted.

15. TIME LIMIT

- 15.1. [NP] The time limit will be 45 minutes. Boats failing to finish within 15 minutes after the first boat in their class finishes or within the time limit, whichever is later, will be scored Did Not Finish. This changes RRS 35.
- 15.2. A race will be abandoned if the windward mark is not reached within 30 minutes.
- 15.3. [NP] Prior to the expiration of the time limit of SI 15.1, the race committee may award finishing places to boats that are delaying the start of the next race or, in the last race of the day that may not finish within the time limit. This changes RRS 20.1, 35, A4 and A5.

16. PROTESTS

- 16.1. Protests shall be written on forms available at the Whistler Sailing Association and delivered to the protest room within one hour after the race officer comes ashore.
- 16.2. In addition to complying with RRS 61, sailors shall inform the Race Committee of their intention to file a protest as soon as practicable after they cross the finish line or withdraw from the race. This changes RRS 61.1.
- 16.3. The protest committee will hear protests in approximately the order of receipt beginning as soon as possible.

17. SCORING

- 17.1. One race shall constitute a series.
- 17.2. (a) When fewer than five races have been completed, a boat's score shall be the sum of all its races.
(b) When five to nine races have been completed, a boat's score shall be the sum of all races excluding the worst score.
(c) When ten or more races have been completed, a boat's score shall be the sum of all its races excluding the two worst scores.

18. SAFETY

[DP][NP] A boat that retires from a race is asked to notify the Race Committee as soon as possible. Coaches can notify the RC on VHF channel 21A CAN.

19. EQUIPMENT

- 19.1. [DP][NP] Substitution of damaged or lost equipment shall not be allowed unless approved by the race committee. Requests for substitution shall be made to the race committee at the first reasonable opportunity.
- 19.2. [DP][NP] Substitution of sails or sail numbers will not be allowed unless approved by the race committee. Requests for substitution shall be made to the race committee prior to the first race of the day.
- 19.3. [DP][NP] Any class rule requiring sail numbers to correspond to hull numbers will not apply. In the event of a conflict between registered sail numbers, the Race Committee will specify alternate numbers.
- 19.4. [DP][NP] Boats will register only one sail number and will have that number on their mainsail. A boat, which races with no number or a number other than the

one that has been registered, unless approved in writing by the Jury, may not be scored.

20. SUPPORT BOATS

- 20.1. [DP][NP] Team leaders, coaches and other support personnel shall stay outside areas where boats are racing from the time of the preparatory signal for the first class to start until all boats have finished or the race committee signals a postponement, general recall or abandonment. This rule does not apply to the Optimist Green fleet, where normal coaching on course is allowed. Support boats will move in a fashion to ensure their wake does not affect boats racing.
- 20.2. [DP][NP] All coaches and coach boats must register at the registration desk at Whistler Sailing Association.
- 20.3. [DP][NP] Due to the nature of the venue, only coaches will be allowed in motorized support boats.
- 20.4. [DP][NP] The speed limit for motor boats on Alta Lake is 7 knots or 12km/h, and will be enforced. Coaches are expected to use due diligence regarding other traffic on the lake including swimmers, who may be difficult to see. The speed limit does not apply to sailboats. This speed limit also does not apply in case of emergency.
- 20.5. Coaches must be familiar with the rescue plan, which will be posted on the official notice board.

21. RISK STATEMENT

- 21.1. RRS 3 states: 'The responsibility for a boat's decision to participate in a race or to continue to race is hers alone.' By participating in this event each competitor agrees and acknowledges that sailing is a potentially dangerous activity with inherent risks. These risks include strong winds and rough seas, sudden changes in weather, failure of equipment, boat handling errors, poor seamanship by other boats, loss of balance on an unstable platform and fatigue resulting in increased risk of injury. **Inherent in the sport of sailing is the risk of permanent, catastrophic injury or death by drowning, trauma, hypothermia or other causes.**

22. RIGHTS TO USE NAME AND LIKENESS

- 22.1. By participating in this event, competitors automatically grant to the organizing authority and the event sponsors the right, in perpetuity, to make, use, and show, at their discretion, any photography, audio and video recordings, and other reproductions of them made at the venue or on the water from the time of their arrival at the venue, until their final departure, without compensation.

Appendix 1

Courses: see diagram

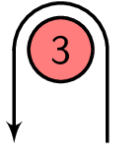
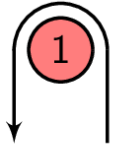
Optimist championship fleet

Code Flag	Course	Marks
1	Windward Leeward	Start – 3 – 4p – 5 – Finish
2	Windward-Leeward (x2)	Start – 3– 4s/4p – 3 – 4p –5- Finish

ILCA 7 , ILCA 6, ILCA 4, Pirate, Rs Feva, and 420

Code Flag	Course	Marks
1	Windward Leeward	Start – 1– 2P - 5 -Finish
2	Windward-Leeward (x2)	Start – 1– 2S/2P – 1 – 2P – 5 -Finish
3	Windward-Leeward (x3)	Start – 1– 2S/2P – 1– 2S/2P- 1 – 2P – 5 -Finish

Course Diagram:



wind
↓

